



URMI ENVIRO TECH PVT. LTD.

A total solution to all Environmental and GIS issues



Who we are

Promoted by Scientists and Engineers, we are a global technology consulting and services organization



Mission

To provide zero defect solutions and services to our clients on time, every time.....cost effectively





URMI ENVIRO TECH PVT. LTD.



A single source provider of

- **Total Environmental Management**
- **Wastewater Treatment, Recycle and Reuse**
- **Rainwater Harvesting**
- **Geographic Information Systems (GIS) application and Development - Geospatial Solutions**





URMI ENVIRO TECH PVT. LTD.

Environmental Management



- **Environmental Consultancy**
- **Pollution Control at Source**
- **Industrial Wastewater Treatment**
- **Domestic Wastewater Treatment**
- **Solid Waste Management – *Canteen, Kitchen, Garden and Municipalities***
- **Consent Management**
- **Environmental Impact Assessment Studies**
- **Environmental Training**
- **Environmental Modeling**



Rainwater Harvesting

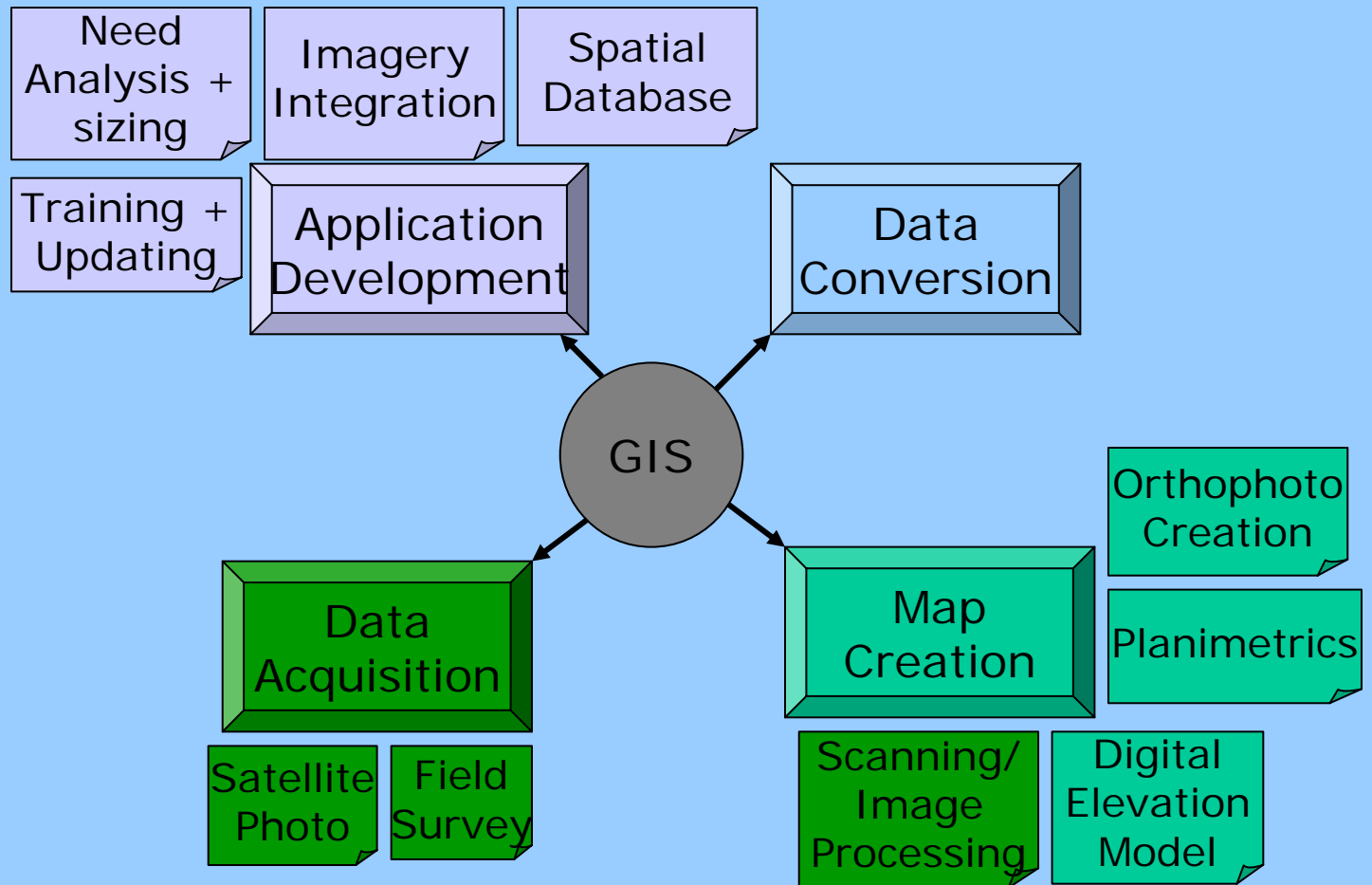


- Rooftop Collection
- Harvesting from the Premises of Individual and Societies
- Recharge of Open / Dug Well
- Recharge of Ground Water / Bore Well
- Collection in tanks for immediate use
- Collection of water for future use
- Design and Installation of Rainwater Harvesting System



URM ENVIRO TECH PVT. LTD.

Geospatial Solutions





URMI ENVIRO TECH PVT. LTD.

Geospatial Solutions



Data Conversion

- **Raster to Vector**
- **AM / FM / GIS Mapping**
- **Extraction of Data from Aerial Photographs**
- **Extraction of Data from Satellite Images**



Customization / Application Development

- **Developing User Friendly GUI**
- **Develop Applications tailored to meet end user's requirement**





URMI ENVIRO TECH PVT. LTD.

GIS Solution – Business Development

Humans think visually - spatially



- A spatial representation of reports and information
- Rendering the multi-dimensional reports onto a digital map
- Using color coded areas to highlight information
- View of real world market
- Integration of various databases represented as various layers for comparison on single map
- Geographical analysis for customer touch points
- Zoom feature to view aggregated data at national level and drilled down data within a city
- Site selection based on geographic and demographic parameters





Business GIS - Benefits



- 'Map' your business progress
- Intuitive and interactive user interface
- Understand geographic behavior
- Effective theme based reporting to TOP management
- Growth Analysis
- Potential Index Analysis
- Territory wise / cluster wise / branch wise analysis possible
- Location analysis for retail expansion
- Target market definition and market penetration analysis
- Competitor analysis
- Demographic analysis
- Theme based map based on Product wise analysis
- Can be integrated to your existing data base





URMI ENVIRO TECH PVT. LTD.

Geospatial Solutions

Cadastral map used for Property tax purposes

– For Municipalities

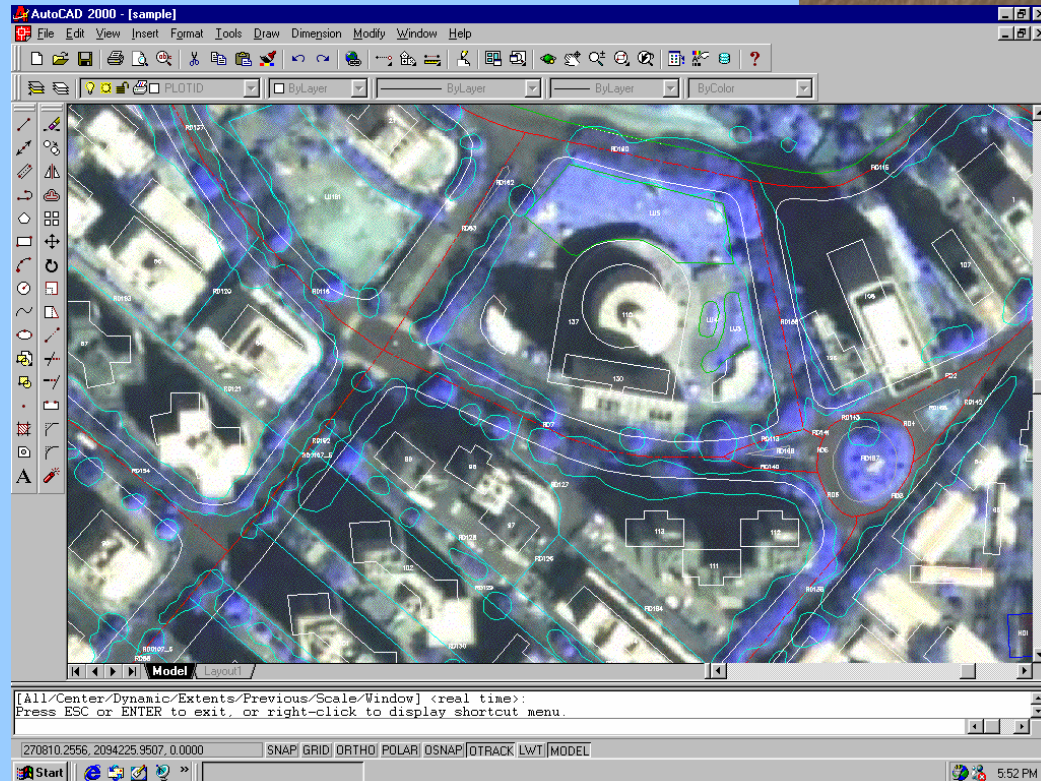
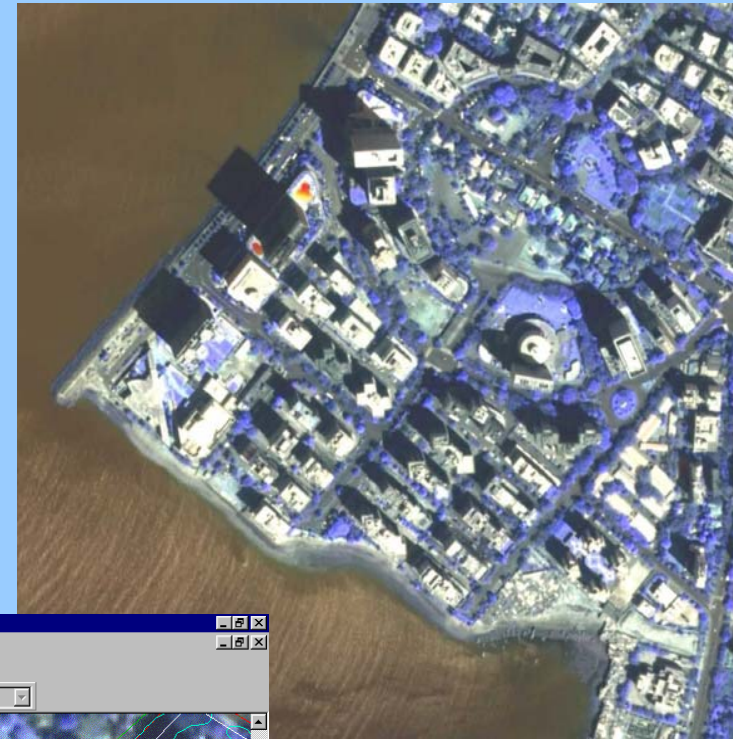




URMI ENVIRO TECH PVT. LTD.

Geospatial Solutions

Extraction of building level data using Ikonos 1 m resolution satellite images
– For Corporate and Municipality Application





ENVIRONMENT



GIS



RAINWATER

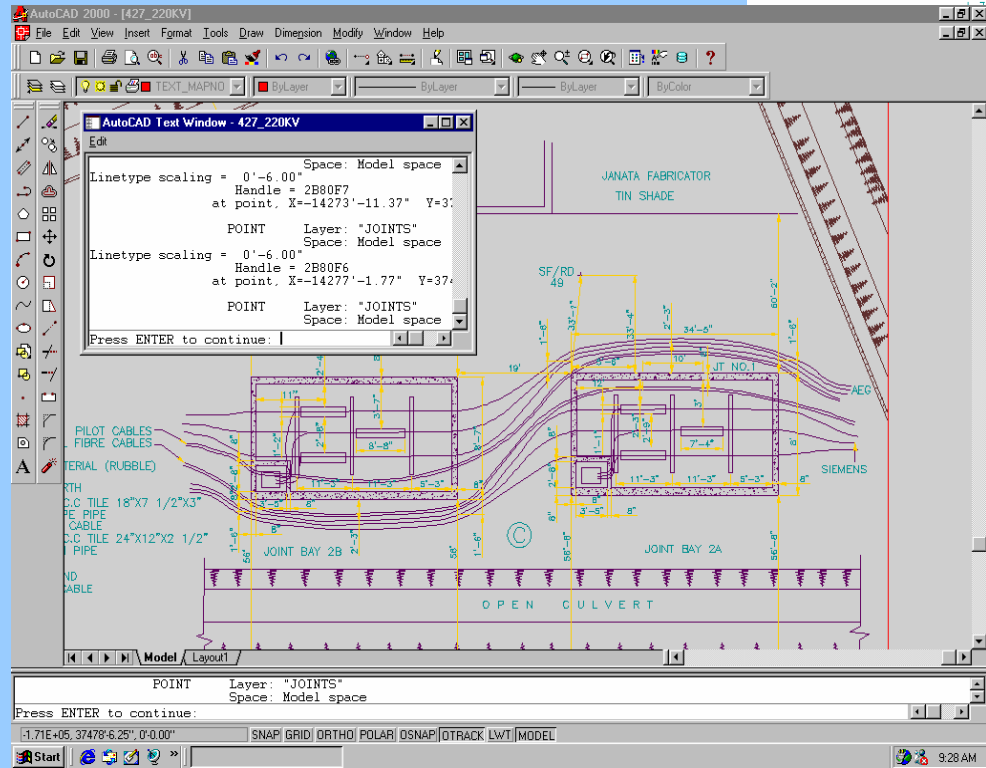
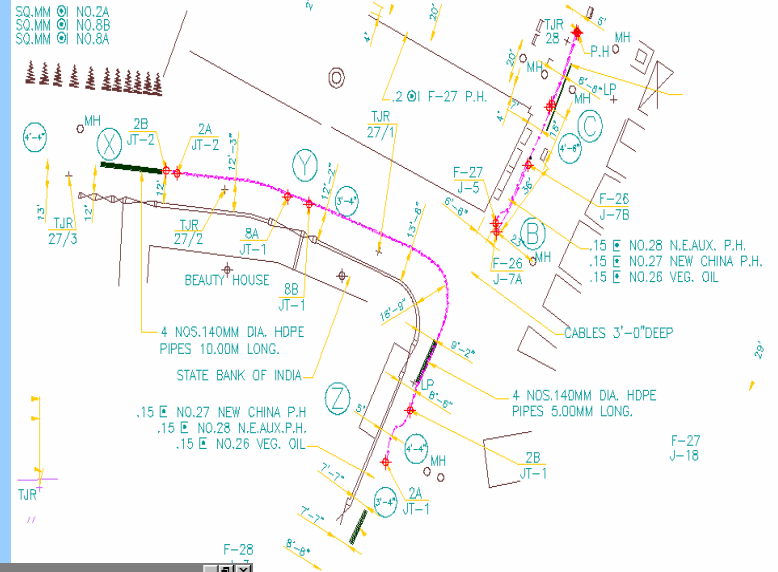


$y=f(x)$
STATISTICAL ANALYSIS



Geospatial Solutions

Utility Mapping – Electricity and Telecommunication Distribution Network



AutoCAD Text Window - 427_220KV
Edit
Linetype scaling = 0'-6.00" Space: Model space
Handle = 2B80F7
at point, X=-14273'-11.37" Y=3:
POINT Layer: "JOINTS"
Space: Model space
Linetype scaling = 0'-6.00"
Handle = 2B80F6
at point, X=-14277'-1.77" Y=37:
POINT Layer: "JOINTS"
Space: Model space
Press ENTER to continue:

PILOT CABLES
FIBRE CABLES
TERIAL (RUBBLE)
RTH
C.C TILE 18"x7 1/2"x3"
FE PIPE
CABLE
C.C TILE 24"x12"x2 1/2"
PIPE
ND
CABLE

POINT Layer: "JOINTS"
Space: Model space
Press ENTER to continue:

[1.71E+05, 37478'-6.25", 0'-0.00"]
SNAP| GRID| ORTHO| POLAR| OSNAP| OTRACK| LWT| MODEL



Geospatial Solutions

Contour mapping



The image displays the MicroStation 95 software interface for a project named "WATERSHED PROJECT". The main window shows a topographic map with brown contour lines and blue stream lines. A green rectangular box highlights a specific area on the map. A smaller window titled "Window 2" provides a zoomed-in view of the contour lines. The software's menu bar includes "File", "Edit", "Element", "Settings", "Tools", "Utilities", "Workspace", "Window", and "Help". The status bar at the bottom shows the current tool settings: "Type=LINE STRING, Level=2" and "Place Block". The Windows taskbar at the very bottom shows the Start button and several open applications: "MS-DOS Prompt", "nilgiris.dgn (2D...", "Exploring - Doc", "Microsoft Excel - di...", and "untitled - Paint". The system clock indicates the time is 16:13.



URMI ENVIRO TECH PVT. LTD.
Geospatial Solutions

An application developed to view and analyse the data spatially



Query Builder

Active Map Layer: THRISSUR

Select Parameters	And	Or	Values
DHQ_NAME			9512
TEH_NAME			9540
T_POPLN			9542
VILL_CODE			9631
			9707
			9714
			9822

T_POPLN = Total Population

Query can be performed on the basis of selected parameters. Query results get highlighted on the map.
 Double click while selecting parameters and values.

Min: 0
 Max: 81798
 Mean: 10305.6

Join Table

T_POPLN > 20000

Number of Selected Features = 24

Go Close Clear

Administrative Map

Select Map

Select State: MAHARASHTRA Add

Select District: PUNE Add

Select State name first. Then choose the required district from the selected State to add village level map of that district.

Preview Map: [Map of India with highlighted regions]

Road Network Select State: ANDHRA PRADESH Add

Ok Cancel

Create Buffer

Point Feature: [Diagram showing buffer around points]

Line Feature: [Diagram showing buffer around lines]

Polygon Feature: [Diagram showing buffer around a polygon]

A buffer is a band of fixed width around a map feature.

Selected Layer: KARNATAKA

Select feature to buffer: [Map with selection box]

Specify buffer distance in Meters: 3000

Ok Close

Identify Results

Theme: AHMADABAD
 Shape Type: Polygon

Attributes:

SHQ_NAME = GUJARAT
 AREA_KM = 0
 ST_CODE = 07
 DHQ_DIST = 0
 THSIL_CODE = 0010
 VT_NAME = AHMADABAD
 VT_CODE = C001
 FeatureId = 271
 H_HOLD = 568583
 DIST_CODE = 12
 VT_CLASS = 2
 NEA_TOWN = Gandhinagar
 RES_HOLD = 565056
 SHQ_DIST = 32
 CIVIC_ST = M.Corp. & OG

Location: (2451083,-974083)



Highly Qualified Professionals

Project Managers are vertical segment specialists

- Scientists
- Engineers
- Cartographers



GIS and project management are common skills



Operations team consists of project leader, team leaders and a pool of executives skilled in production tools



A task force matched to project requirements is assigned to each project



Competency Table

GIS - ESRI

ArcGIS (ArcInfo, ArcView, ArcEditor), 3D Analyst
Arc IMS, Arc SDE, ArcObjects, AML, Avenue

GIS - MapInfo

MapInfo Professional, MapXtreme, Map Basic

CAD - Autodesk

AutoCAD Map, Autodesk MapGuide, Auto Lisp

Image Processing

ER Mapper, ERDAS Imagine, ENVI

Client, Middle Tier

Java, EJB, Java Server Pages, J2EE
HTML, DHTML, XML

Visual Basic, ASP, C #, .NET, ActiveX

Databases

Oracle, Microsoft SQL Server, Informix, MySQL





Advantage



- Certified domain experts in Environmental Management and Geospatial Solutions

- Worldwide Experience

- Cost effective services with commitment to quality



- Availability of large resource pool of experienced technical professionals



- 24x7 delivery using state of the art hardware and software infrastructure

- Onsite project management



URMI ENVIRO TECH PVT. LTD.

Thank you



Urmi Enviro Tech Pvt. Ltd.

B-2065 Oberoi Garden Estate

Chandivali, Near Chandivali Studio

Andheri (East)

Mumbai – 400 072

Voice: +(91-22) 4015 4060

Fax: +(91-22) 2847 7665

Mobile: 09930350921

Web: www.urmienvirotech.com